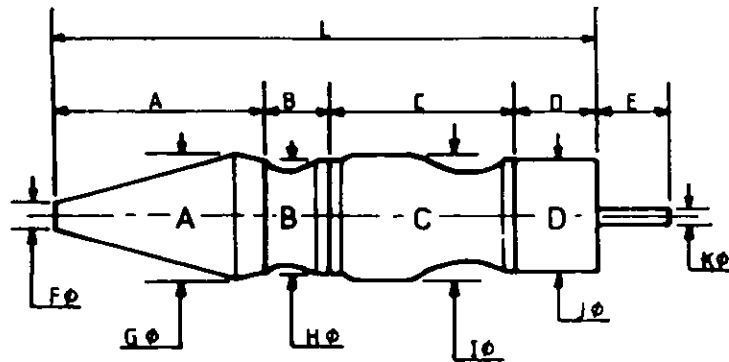


# DIMENSION SHEET FOR SOUTHERN CROSS MARK "LA" SERIES TURBINE PUMPS.

**"LA"**  
SERIES



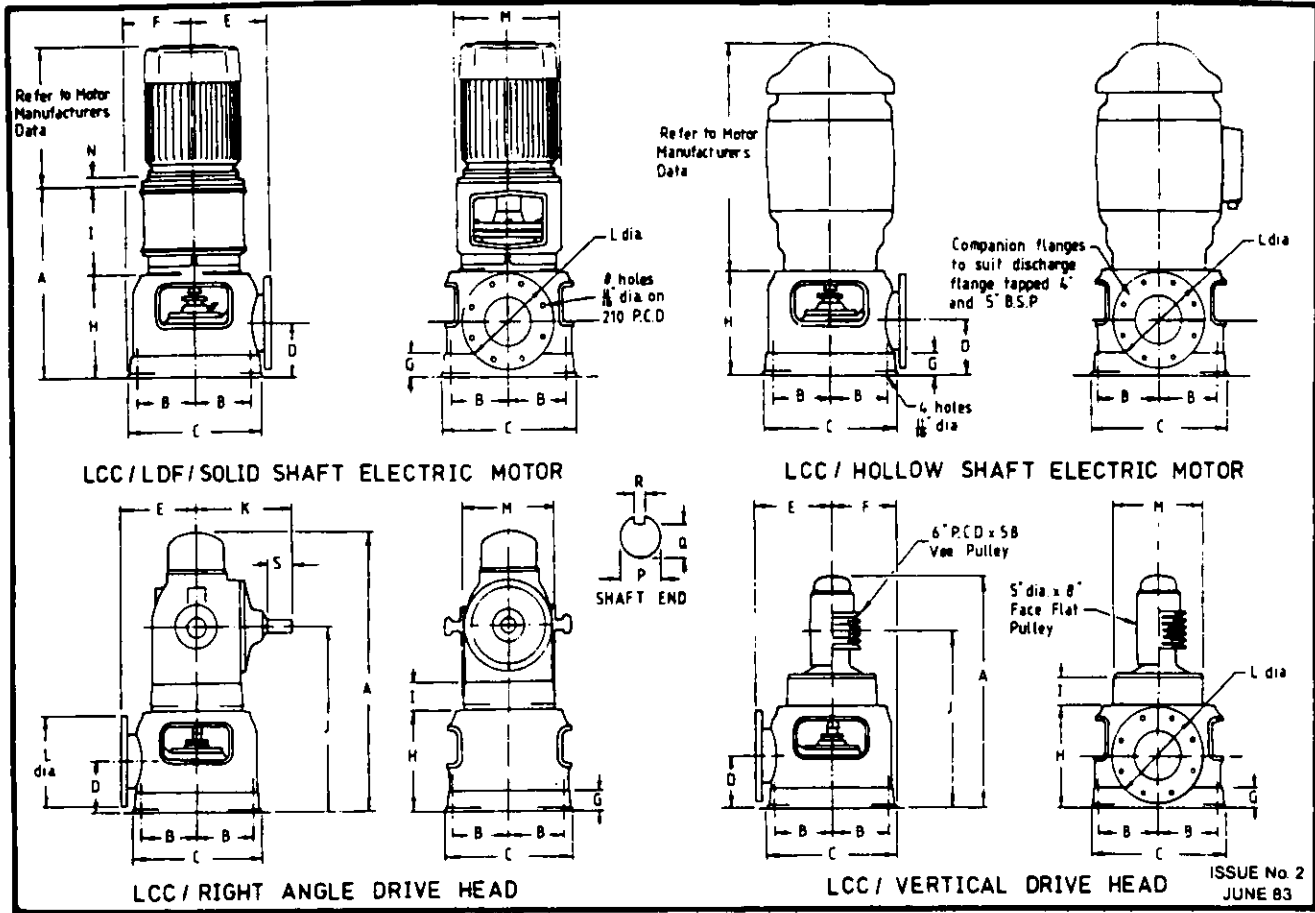
- A. Strainer
- B. Inlet Casing
- C. Pump Stage
- D. Column Pipe to Pump Coupling

**NOTE:**

1. All diameters are taken as max. for each component.
2. For multiple stages - total length = L+M where  
 L=length of single stage (below)  
 M=C×(T-1)  
 C=length of stage (below)  
 T=number of stages required.

PUMP	OUTLET SIZE (ins)	DIMENSIONS (mm.)											
		A	B	C	D	E	F	G	H	I	J	K	L
LA-A	3	209	24	111	101.5	139	53	132.5	125.5	127	127	19	445.5
	4	209	24	111	105	135.5	53	132.5	125.5	127	130	19	448.5
LA-B	3	209	24	111	101.5	139	53	132.5	125.5	127	127	19	445.5
	4	209	24	111	105	135.5	53	132.5	125.5	127	130	19	448.5
LA-D	4	209	24	139.5	193.5	91.5	53	132.5	125.5	125.5	130	19	566
	5	209	24	139.5	206.5	78.5	53	132.5	125.5	125.5	158.5	19	578.5
LA-F	4	209	30	139.5	193.5	85.5	53	132.5	135	135	135	19	572.5
	5	209	30	139.5	206.5	73	53	132.5	135	135	158.5	19	585
LA-H	4	305	64.5	144.5	85.5	150	53	164.5	158.5	171.5	155.5	25.5	599.5
	5	305	64.5	144.5	112.5	123	53	164.5	158.5	171.5	155.5	25.5	626.5
LA-J	6	393.5	62.5	178	146	48.5	53	164.5	178	184	181	35	780.5

# DIMENSION SHEET FOR SOUTHERN CROSS TURBINE PUMPS DRIVE HEADS



DRIVE HEAD	A	B	C	D	E	F	G	H	I	J	K	L	M	P	Q	R	S	
LCC/LDF/SOLID SHAFT ELECTRIC MOTOR	525	165	381	146	222	191	60	286	240	-	-	257	298	-	-	-	-	
LCC/HOLLOW SHAFT ELECTRIC MOTOR	-	165	381	146	222	191	60	286	-	-	-	257	-	-	-	-	-	
LFC/RIGHT ANGLE	794	165	381	146	222	-	60	286	79	502	273	257	260	38.10 38.07	34.24 34.11	9.53 9.58	75	
LFD/RIGHT ANGLE	883	165	381	146	222	-	60	286	84	518	321	257	302	44.45 44.42	39.62 39.47	12.67 12.70	100	
LFE/RIGHT ANGLE	959	165	381	146	222	-	60	286	160	565	406	257	302	50.80 50.77	46.02 45.90	12.67 12.70	108	
LEC/VERTICAL	654	165	381	146	222	191	60	286	76	641	-	257	260	-	-	-	-	
MOTOR SIZE (LDF DRIVE HEAD ONLY)	4, 5-5 HP		15, 20, 25, 30 HP T.E.F.C.								40, 50 HP T.E.F.C., 15-50 H.P. D.P.							
N	25.58 25.20		30.35 29.97								30.35 29.97							